

Please write clearly in block capitals.

Centre number

Candidate number

Surname _____

Forename(s) _____

Candidate signature _____

A-level MATHEMATICS

Unit Pure Core 3

Wednesday 14 June 2017

Morning

Time allowed: 1 hour 30 minutes

Materials

For this paper you must have:

- the blue AQA booklet of formulae and statistical tables.
- You may use a graphics calculator.

Instructions

- Use black ink or black ball-point pen. Pencil should only be used for drawing.
- Fill in the boxes at the top of this page.
- Answer **all** questions.
- Write the question part reference (eg (a), (b)(i) etc) in the left-hand margin.
- You must answer each question in the space provided for that question. If you require extra space, use an AQA supplementary answer book; do **not** use the space provided for a different question.
- Do not write outside the box around each page.
- Show all necessary working; otherwise marks for method may be lost.
- Do all rough work in this book. Cross through any work that you do not want to be marked.

Information

- The marks for questions are shown in brackets.
- The maximum mark for this paper is 75.

Advice

- Unless stated otherwise, you may quote formulae, without proof, from the booklet.
- You do not necessarily need to use all the space provided.

For Examiner's Use	
Question	Mark
1	
2	
3	
4	
5	
6	
7	
8	
9	
10	
TOTAL	



Answer **all** questions.

Answer each question in the space provided for that question.

1 (a) Given that $y = (\sin 4x)(\sec 3x)$, use the product rule to find $\frac{dy}{dx}$.

[2 marks]

(b) Find $\int \frac{6x}{2x^2 + 3} dx$.

[2 marks]

QUESTION
PART
REFERENCE

Answer space for question 1



- 2 (a) Use the mid-ordinate rule with five strips to find an estimate for $\int_{0.5}^{1.5} e^{3x-x^3} dx$, giving your answer to three decimal places.

[4 marks]

- (b) A curve has equation $y = e^{3x-x^3}$. Find the exact values of the coordinates of the stationary points of the curve and determine the nature of these stationary points.

[7 marks]

QUESTION
PART
REFERENCE

Answer space for question 2



3 Use the substitution $u = \cos 2x$ to find

$$\int \cos^2 2x \sin^3 2x \, dx$$

[5 marks]

QUESTION
PART
REFERENCE

Answer space for question 3



4 The line $y = x$ and the curve with equation $y = \ln\left(\frac{3x+10}{3x+1}\right)$, where $x > 0$, intersect at a single point where $x = \alpha$.

(a) Show that α lies between 1 and 2.

[2 marks]

(b) (i) Use the iterative formula

$$x_{n+1} = \ln\left(\frac{3x_n + 10}{3x_n + 1}\right)$$

with $x_1 = 2$ to find the values of x_2 and x_3 , giving your answers to three decimal places.

[2 marks]

(ii) **Figure 1**, on the opposite page, shows a sketch of parts of the graphs of $y = \ln\left(\frac{3x+10}{3x+1}\right)$ and $y = x$, and the position of x_1 .

On **Figure 1**, draw a cobweb or staircase diagram to show how convergence takes place, indicating the positions of x_2 and x_3 on the x -axis.

[2 marks]

QUESTION
PART
REFERENCE

Answer space for question 4



5 The function f is defined by

$$f(x) = \ln(3x + 1), \text{ for } x \geq 0$$

The function g is defined by

$$g(x) = \frac{d}{dx}(f(x)), \text{ for } x \geq 0$$

The inverse of f is f^{-1} .

(a) Find expressions for $f^{-1}(x)$ and $g(x)$.

[4 marks]

(b) Show that the equation $f^{-1}(x) = g(x)$ can be rearranged into the form

$$x = \ln\left(\frac{3x+10}{3x+1}\right)$$

[2 marks]

QUESTION
PART
REFERENCE

Answer space for question 5



6 Use integration by parts to find the value of $\int_1^5 \frac{3x}{\sqrt{2x-1}} dx$.

[6 marks]

QUESTION
PART
REFERENCE

Answer space for question 6



7 You are given that k is a positive constant.

By sketching the graphs of $y = |5x - 3k|$ and $y = 3|x + 4k|$ on the same axes, solve the inequality

$$|5x - 3k| \geq 3|x + 4k|$$

[5 marks]

QUESTION
PART
REFERENCE

Answer space for question 7



- 8 (a) By using a suitable trigonometrical identity, solve the equation

$$\tan^2\left(2x - \frac{\pi}{6}\right) = 11 - \sec\left(2x - \frac{\pi}{6}\right)$$

giving all values of x in radians to two decimal places in the interval $0 \leq x \leq \pi$.

[7 marks]

- (b) Describe a sequence of **two** geometrical transformations that maps the graph of

$$y = f\left(2x - \frac{\pi}{6}\right) \text{ onto the graph of } y = f(x).$$

[4 marks]

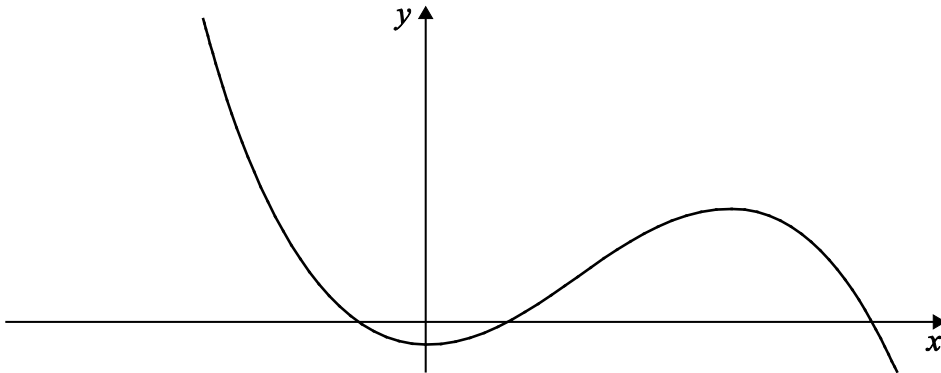
QUESTION
PART
REFERENCE

Answer space for question 8



- 9 **Figure 2** shows part of the curve with equation $y = f(x)$.

Figure 2

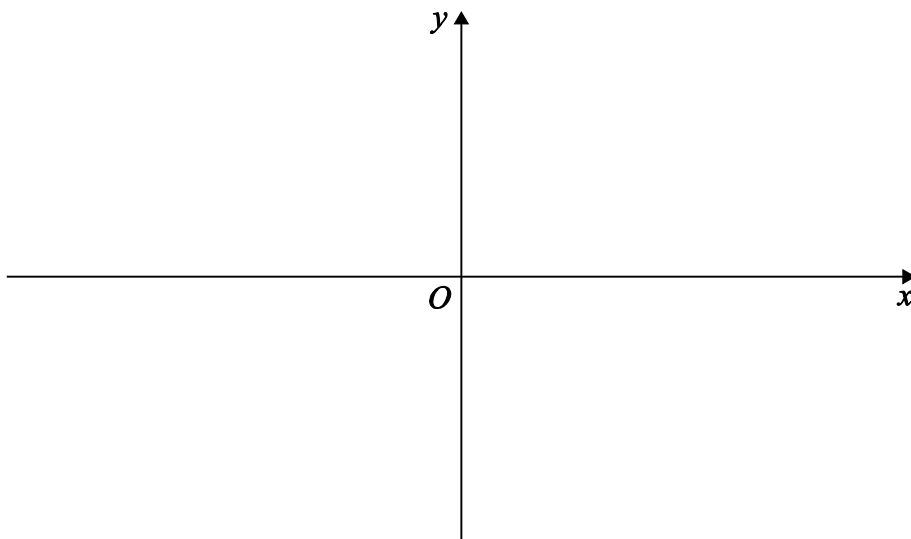


- (a) On **Figure 3** below, sketch the curve with equation $y = |f(x)|$. **[3 marks]**
- (b) On **Figure 4** opposite, sketch the curve with equation $y = -f(|x|)$. **[2 marks]**
- (c) The curve with equation $y = f(x)$ has a minimum point at $(0, b - 2)$ and a maximum point at $(a, 9b)$, where $0 < b < 2$.
- (i) Find the coordinates of the minimum point of the curve with equation $y = f(x + a) + 2b$. **[2 marks]**
- (ii) Find the coordinates of the maximum point of the curve with equation $y = 3f(2x)$. **[2 marks]**

QUESTION
PART
REFERENCE

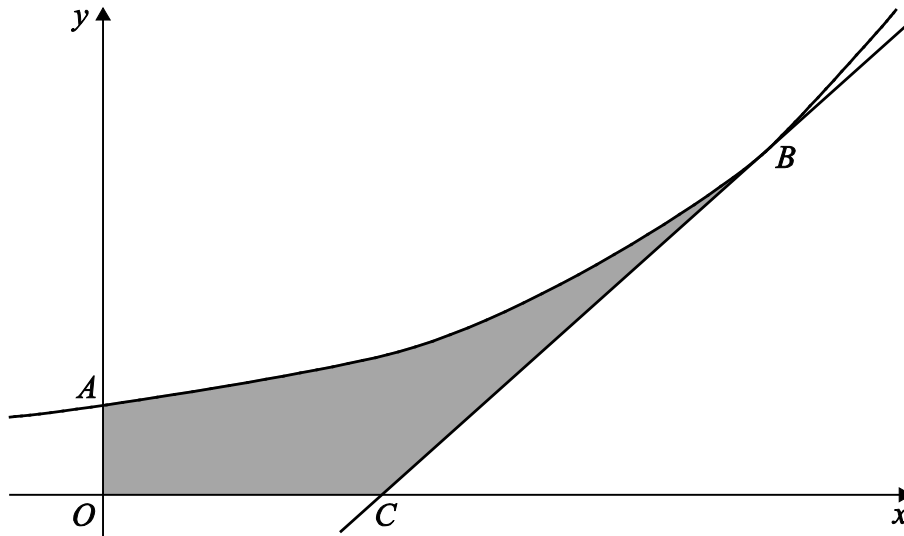
Answer space for question 9

Figure 3



10

The diagram shows the curve $y = e^{2x}$, intersecting the y -axis at the point A , and the tangent to this curve at the point B , where $x = \ln 4$, intersecting the x -axis at the point C .



- (a) (i) Find an equation of the tangent to the curve at B .

[3 marks]

- (ii) Hence show that the coordinates of C are $\left(\ln 4 - \frac{1}{2}, 0\right)$.

[1 mark]

- (b) The shaded region $OABC$ is rotated through 2π radians about the x -axis to form a solid. Find the **exact** value of the volume of the solid generated.

(You may assume that the volume of a cone of radius r and height h is $\frac{1}{3}\pi r^2 h$.)

[8 marks]

 QUESTION
PART
REFERENCE

Answer space for question 10



There are no questions printed on this page

**DO NOT WRITE ON THIS PAGE
ANSWER IN THE SPACES PROVIDED**



There are no questions printed on this page

**DO NOT WRITE ON THIS PAGE
ANSWER IN THE SPACES PROVIDED**

Copyright information

For confidentiality purposes, from the November 2015 examination series, acknowledgements of third party copyright material will be published in a separate booklet rather than including them on the examination paper or support materials. This booklet is published after each examination series and is available for free download from www.aqa.org.uk after the live examination series.

Permission to reproduce all copyright material has been applied for. In some cases, efforts to contact copyright-holders may have been unsuccessful and AQA will be happy to rectify any omissions of acknowledgements. If you have any queries please contact the Copyright Team, AQA, Stag Hill House, Guildford, GU2 7XJ.

Copyright © 2017 AQA and its licensors. All rights reserved.

